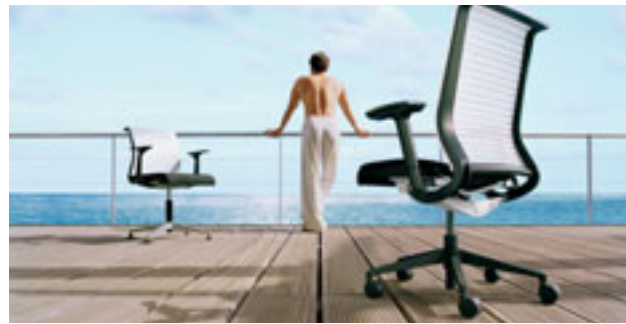


Think
Think

Think – The chair with a brain and a conscience



Think – The chair with a brain and a conscience

Almaty . Amsterdam . Athens . Baku . Bangkok . Beijing . Belgrade . Bologna . Brussels . Bucharest . Budapest . Casablanca
Dubai . Geneva . Hong Kong . Istanbul . Kiev . Kuala Lumpur . Lisbon . London . Madrid . Melbourne . Mexico City . Milan
Minsk . Monterrey . Moscow . Nicosia . Paris . Prague . Rio de Janeiro . Rome . Rosenheim . Riyadh . Sao Paulo
Singapore . Sofia . Stockholm . St Petersburg . Strasbourg . Sydney . Tokyo . Tunis . Vladivostok . Warsaw . Zagreb

North America 901, 44th Street . Grand Rapids MI 49508 USA > **tel:** +1 616 247 27 10 > **fax:** +1 616 246 40 40

Asia Pacific & India 4th floor, N32 Kowa Bldg . 5-2-32 Minami-Azabu . Minato-Ku . Tokyo 106-0047 Japan > **tel:** +81 3 3448 9611 > **fax:** +81 3 3448 9617


Europe 56, rue Jean Giraudoux . BP 6 . 67035 Strasbourg Cedex 02 France > **tel:** +33 3 88 13 30 30 > **fax:** +33 3 88 28 31 78

Latin America 901, 44th Street . Grand Rapids MI 49508 USA > **tel:** +1 616 247 27 10 > **fax:** +1 616 246 40 40

Middle East & Africa PO Box 54269 . Dubai Airport Free Zone . Unit WMR8 . Dubai UAE > **tel:** +971 50 450 22 74 > **fax:** +971 4 299 6303

DS177UK 05/05 © 2004 Steelcase. All rights reserved. All specifications subject to change without notice. Printed on at least 50 % recycled paper. Printed in France by OTT Imprimeur - Wasselonne





“...Workspace is increasingly shared.”

We thought...
how can we still innovate when...

“...Nobody has time to learn how to adjust a chair correctly.”

“...People are increasingly concerned for the environment.”

How can we make a better chair for the 21st century workplace?

Today's office seating has to address a whole range of new demands – **workspace is increasingly shared; nobody has time to learn** complicated ergonomic adjustments; and there is increasing **concern for the environment**. That's why, as part of our global approach to High Performance Seating, we have created a major new chair that is specifically designed to address these demands. **We named it Think.**

Think. The chair with a brain and a conscience

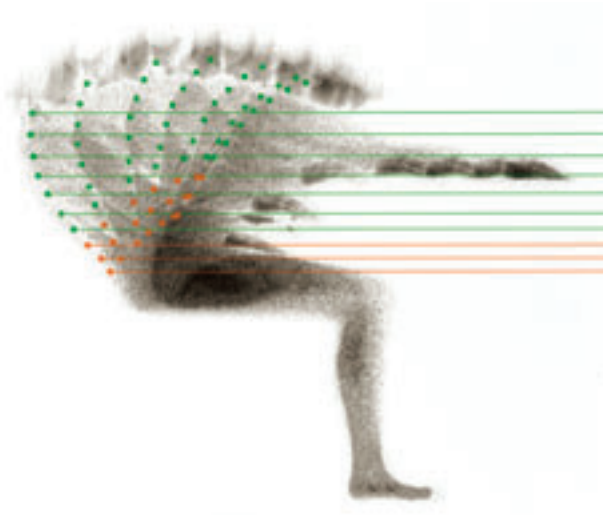
It's a chair that's intelligent enough to understand how you sit, adjusting itself intuitively to your body and movements. A chair thoughtful enough to measure and minimise its lifelong impact on the environment. In fact, it's almost as if the **chair could think** – as if it had a brain and a conscience.



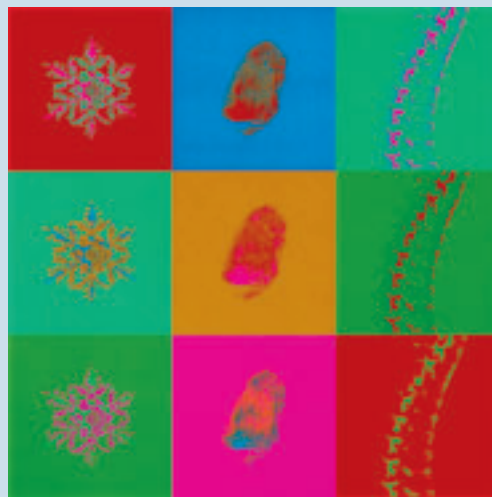
“ Design isn’t just about style. It’s about integrity of materials, functional integrity, and intent. Think is a truthful chair – the result of open dialogue between engineers, environmentalists, and the designer.”

Glen Oliver Löw

Designer of the Think chair



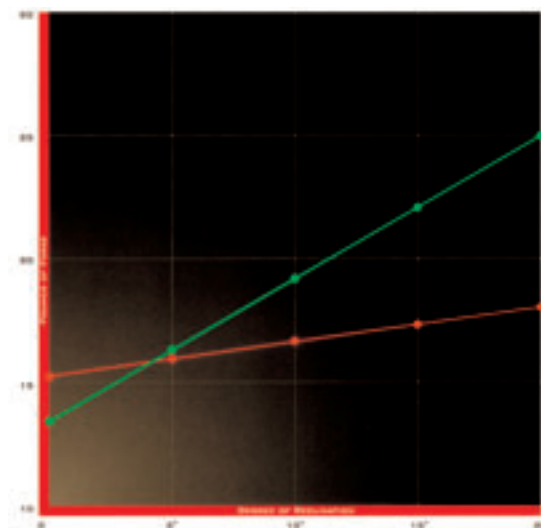
The spine doesn't move as a single unit. It changes shape as we change our posture. For example, when leaning backwards the upper back moves backwards whilst the lower back rotates forward.



Each individual's spinal motion is unique. Each of us has our own 'spine-print'- as unique as our fingerprints. Our 'spine-print' changes as our posture changes throughout the day.

We studied user needs and listened to our customers

Based on research with the University of Vermont Back Research Center and Michigan State University, we applied **3 key discoveries on the movement of the spine** (Motion study) in the seated position.



The upper and lower back requires different amounts and kinds of support. For instance, when we recline our need for upper back support increases – however, our lower spine requirements remain more or less the same.





A2041

“Chairs should have few adjustments”

“I would like arms that move out of the way”



A2048

We’ve learned a lot about **user needs and behaviour** by observing, filming and interviewing people in their work-space – this gave us **key development directions for Think.**



“I do not want to worry about adjustments once made”



Smart comfort

Think is a chair that **senses what your body needs** – then delivers it.

It adapts to your back and seat shape when you change posture. Its backrest supports you **according to your weight and your preferred workstyle**, enhancing your comfort in every conceivable working situation.

think



A2064

A2077



Your Power™

Weight activated mechanism moves with the same fluidity as the human body does. It provides support in proportion to your own body weight, whilst keeping you closely oriented to your work.

Your Profile™

Back Flexors follow the natural movement of your spine and pelvis. The back flexors are individually calibrated to the human form to provide optimum support for each area of the back.



Your Profile™

Seat Flexors conform to your body shape, providing a dynamic comfort pocket that adapts to your body.





Adjustable Armrests

(height, depth and pivot)
automatically retract upon
contact with the worksurface,
allowing you to get closer to
your desk.

A gentle push returns them
to their original position.



Simple control

Think is the most appropriate name possible for a chair that understands your needs – that thinks for you, the user. It **adapts cleverly and intuitively** to your natural movements and its **controls are simple** – easy to find, understand and use.

think



Your Preference™

Control combines **4 comfort settings** in one simple dial:

- 1- Regular, weight-activated setting
- 2- Weight-activated plus a 20% boost in resistance
- 3- Mid-recline stop
- 4- Upright back lock

Adjustable headrest

(height and depth) supports the head and neck in both upright and reclined postures.

Think beautiful



Think about the future



We wanted to make a chair
we can safely leave to our kids

When we designed Think, we set out to
balance both user needs and environ-
mental needs in perfect harmony.

The result is a chair that is environmen-
tally responsible throughout its entire
lifecycle, from conception right through
to the end of its life.

think



Think has been designed
using materials which have a low
 impact upon the environment



The Aluminum

is up to 100% post industrial recycled content. The material comes from industrial scrap and waste.



The Steel

is up to 70% recycled content. This could come from recycled automobiles.



The Zinc

is up to 5% recycled content. This could come from recycled automobile engine parts.



The Polyester

is made from recycled materials. One source is recycled plastic bottles.

Recycled materials

44%



for quick and easy **disassembly** at the
 end of the chairs' life, only common
 hand tools are needed



Disassembly with common
 tools in less than

5 minutes



almost totally **recyclable**



Aluminum

Your Think chair could be part of your future car, kitchen appliance, power tool – even your golf clubs.



Steel

We can't begin to list all the places steel is used, but your Think chair could very well be there.



Zinc

Could the watering can you use in twenty years time previously have been in your Think chair?



Polypropylene

Your new coffee maker, washing machine or car bumper, perhaps.



PolyEthylene Terephthalate (PET)

In the future, you could soak in a bathtub recycled from Think.



Polyurethane

Your feet will thank Think for the padding under your future carpet.



Acetal

This hard plastic will be used to make bearings, gears, rollers, pen cases and plumbing fittings.



Nylon

Some day your zips... or your hair-brush could include materials previously used in Think.

Recycle potential

99%

Components (by weight)
 of the Think chair can be
 easily recycled.

To convey transparent information about the environmental performance of Think, Steelcase can provide you with specific documents – “Environmental Product Declaration” (EPD). Please ask your Steelcase dealer for this information.

A chair for you
A chair for your team



A2072

A2073



A2019

With its smart comfort, Think is also a chair for **tasking activities**, involving **long periods of sitting** and high levels of concentration.

Times change. There are no longer clear divisions between Tasking and Teaming environments - Think is the right chair to balance both activities.

A chair for you
A chair for your team

Our chair 



Thanks to its simple controls, Think is designed for **team-based working and collaboration**, allowing for **multiple chair users** with a minimum of readjustment.





Tasking / Teaming



A2011



A2022



A2032



A2033

We wanted to make it
the way you want it

Base finishes



Black



Silver

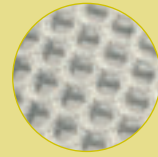


Polished aluminium

3D Knit colours



Black



Coconut

Frame finishes



Slate grey



Black

Armrests



Fixed



Height



Height, depth and pivot

Headrest



Height and depth

Lumbar



Height



	Techno chair	Tasking chair	Teaming chair	Task chair standard
Features				
Your Power mechanism	•	•	•	•
Your Profile seat & back flexors	•	•	•	•
seat height adjustment	•	•	•	•
seat depth adjustment	•	•	•	•
passive front edge	•	•	•	•
Your Preference 4 back comfort settings	•	•	•	•
lumbar height adjustment	◦	•	-	◦
height and depth adjustable headrest	◦	-	-	◦
castor diam 65 mm	•	•	•	•
Armrests				
height adjustable plain arms	◦	-	-	◦
height, pivot, retractable plain arms	◦	•	-	◦
fixed plain arms	◦	-	•	◦
Base				
black plastic base	•	-	-	•
aluminium painted base	◦	•	•	◦
aluminium polished base	◦	-	-	◦
Upholstery Groups				
seat	Gaja	A,B,C,D,E	A,B,C,D,E	A,B,C,D,E
backrest	3D Knit	A,B,C,D,E	A,B,C,D,E	A,B,C,D,E

• standard ◦ option - not available



Conference version



Sled base version



	Sled base visitor chair	4-leg visitor chair	Conference chair
Features			
Your Profile back flexors	•	•	•
Upholstered seat	•	•	•
Upholstered back	•	•	•
Automatic return	-	-	•
seat height adjustment and automatic return	-	-	◦
4 star base on glides	-	-	•
Armrests			
Fixed arms	◦	◦	•
Base			
black base	•	•	•
metallic paint	◦	◦	◦
chrome paint	◦	◦	-
aluminium polished base	-	-	◦
Upholstery Groups for standard			
seat	A,B,C,D,E	A,B,C,D,E	A,B,C,D,E
backrest	A,B,C,D,E	A,B,C,D,E	A,B,C,D,E

	Techno chair	Tasking chair	Teaming chair
Upholstery Groups for model Techno			
seat	Gaja	Gaja	Gaja
backrest	3D Knit	3D Knit	3D Knit

• standard ◦ option - not available



4-leg version



4-leg version



We named it

think

Why not get to know Think at a Steelcase dealer near you? We're sure you'll agree that it's **the chair with a brain and a conscience.**

