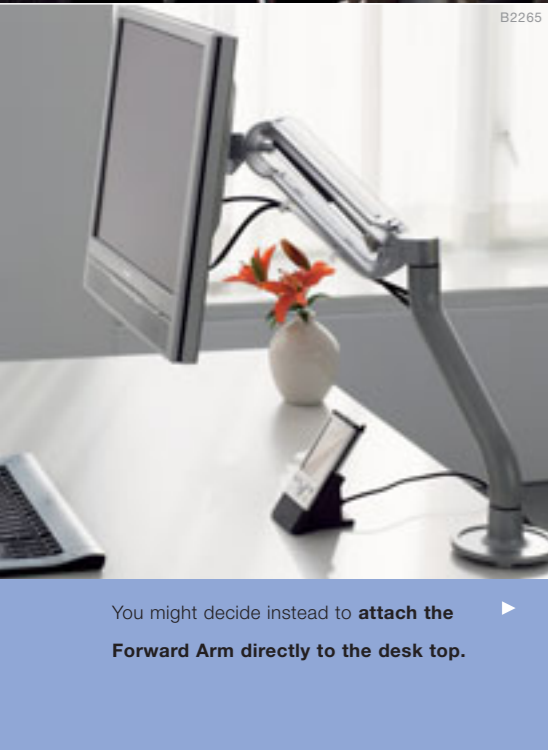




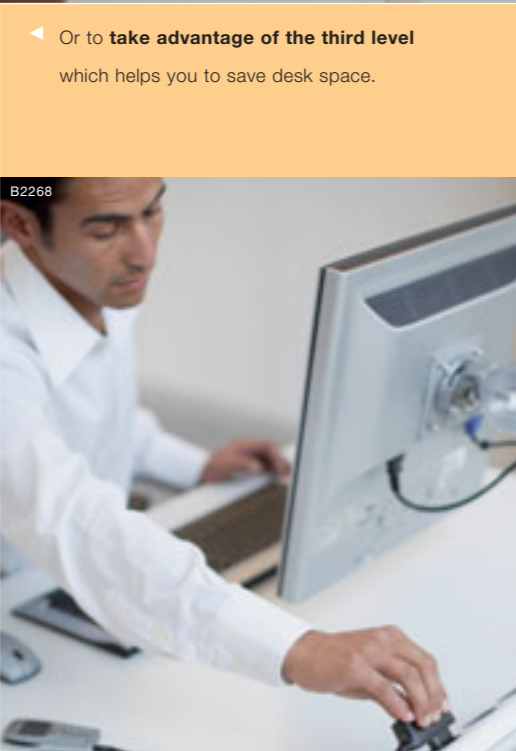
B2264

◀ One option is to **integrate the Forward Arm directly into the Steelcase Forward environment.**



B2265 B2266

You might decide instead to **attach the Forward Arm directly to the desk top.**



B2267

◀ Or to **take advantage of the third level** which helps you to save desk space.

B2268

Concept & design: Remühling Group - www.remuehlinggroup.com Productdesign Forward: Steelcase and Foster and Partners Productdesign FramedOne: Stefan Bräbäck - www.brackdesign.se & Andreas Stuppler - www.stuppelassociates.com Productdesign Think: Glen Oliver Low



Forward Arm – Makes computer work more comfortable

Almaty . Amsterdam . Athens . Baku . Bangkok . Beijing . Belgrade . Brussels . Bucharest . Budapest . Casablanca . Dubai  
 Geneva . Hong Kong . Istanbul . Kiev . Kuala Lumpur . Lisbon . London . Madrid . Melbourne . Mexico City . Milan  
 Minsk . Monterrey . Moscow . Nicosia . Paris . Prague . Rio de Janeiro . Rome . Rosenheim . Riyadh . Sao Paulo  
 Singapore . Sofia . Stockholm . St Petersburg . Strasbourg . Sydney . Tokyo . Tunis . Vladivostok . Warsaw . Zagreb

**North America** 901, 44th Street . Grand Rapids MI 49508 USA > tel: +1 616 247 27 10 > fax: +1 616 246 40 40  
**Asia Pacific & India** 4th floor, N32 Kowa Bldg . 5-2-32 Minami-Azabu . Minato-Ku . Tokyo 106-0047 Japan > tel: +81 3 3448 9611 > fax: +81 3 3448 9617  
**Europe** Espace Européen de l'Entreprise . 1, allée d'Oslo . BP 40033 Schiltigheim . 67012 Strasbourg Cedex France > tel: +33 3 88 13 30 30 > fax: +33 3 88 28 31 78  
**Latin America** 901, 44th Street . Grand Rapids MI 49508 USA > tel: +1 616 247 27 10 > fax: +1 616 246 40 40  
**Middle East & Africa** PO Box 54269 . Dubai Airport Free Zone . Unit WMR8 . Dubai UAE > tel: +971 50 450 22 74 > fax: +971 4 299 6303

www.steelcase.com/uk



Do what you do better.™

Worktools  
Worktools

Comfort

Comfort

Forward Arm  
Makes computer work more comfortable

DIVISION 02/06 © 2006 Steelcase. All rights reserved. At specifications subject to change without notice. Printed on at least 80% recycled paper. Printed in France by OTI Imprimeur - Wesatime.

B2250

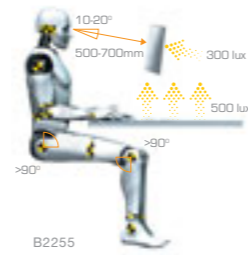


intuitive  
Effortless movement



With the new Forward Arm, you can **effortlessly position** your flat screen to work in **the most comfortable way**. Intuitively raise, lower, swivel or tilt the monitor to get the right height and focal length, reduce glare from ambient light and ensure the healthiest posture.

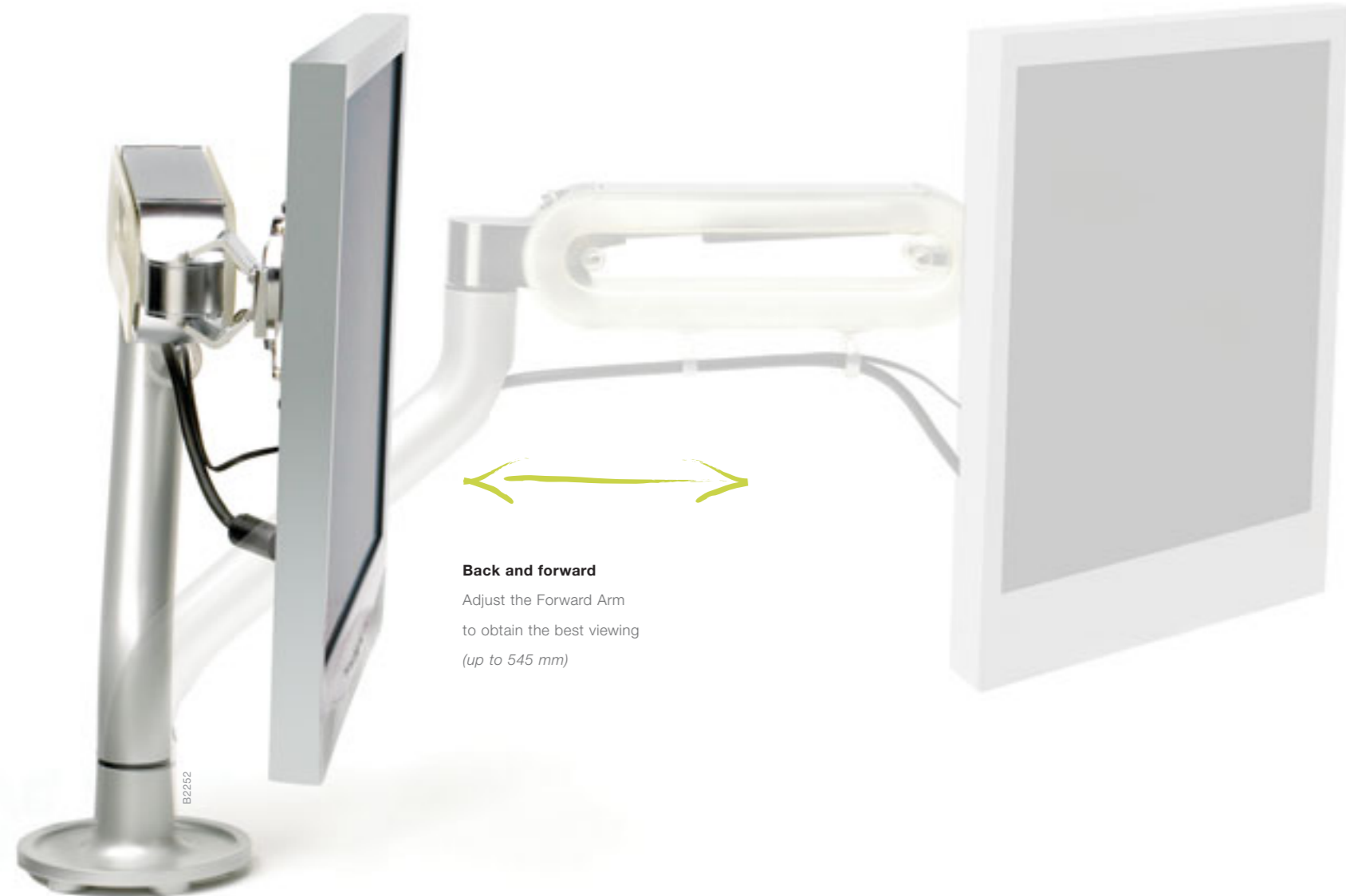
healthy  
Be in control of your comfort



The new Forward Arm puts the user in control of the screen position, ensuring optimum workstation ergonomics and maximum working comfort. *Tip:* make sure that you are one arm's distance from your screen.

diversity  
Forward Arm for everyone

No two office workers are alike. Not only do we have different morphologies but also different activities and preferences. The Forward Arm allows everyone to work the way that suits them best.



**Back and forward**  
Adjust the Forward Arm to obtain the best viewing (up to 545 mm)



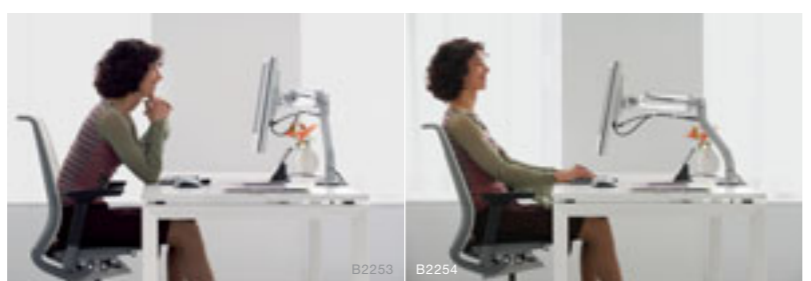
**Swivel and tilt**  
Turn the screen left and right and tilt up and down to avoid glare (20° backwards / 30° forwards)



**Up and down**  
Simply move the Forward Arm up and down to set the right viewing height (up to 290 mm)

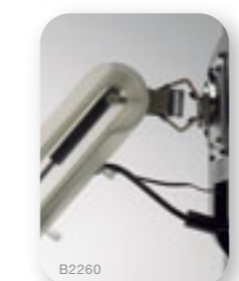
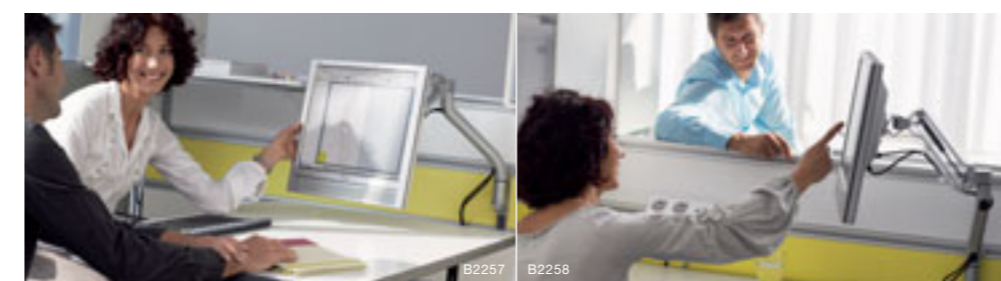
**Different positions for healthier working**

Some like to concentrate by leaning forward. Others prefer to lean back. The Forward Arm allows you to adjust screen height, distance, swivel and tilt at any time. You can also adjust the arm to the monitor weight by tilt tension using the built-in counter balance tool. But the Forward Arm also allows you to free up your space if you need to use all your desk.



**Supports collaboration**

Today's team-based workstyles call for collaboration and information-sharing. The Forward Arm allows you to swivel the flat screen to show something to your neighbour, work side by side with a colleague or even share things with a larger group.



**Field replaceable gas cylinder**  
Adapts to the weight of most screens



**Built-in counter-balance tool**  
• Tool free system  
• Easy and fine tension adjustment



**Quick connect**  
• Includes 75 and 100 mm VESA compliant monitor brackets  
• Includes a secure lock to provide monitor security