



Yesterday the conference room ;-) today the **Work Café**

Conference Collection: Tools



Rethinking the office



The rigid patterns of conferences in the past have become outdated. Today, communication is livelier and takes place anywhere. We call this phenomenon Work Café. That means a comfortable, stimulating and effective environment for modern co-operation and the clever integration of technology, no matter whether in the classic conference room, or informally at any other place.



Tools for the Presentation

Whether you want to "mobilise" the monitor or need the beamer for the presentation...



Storage Space

Screen, videorecorder, instructions... everything becomes firmly established



Mobile Elements

Sometimes it is not necessary to see everything...or to be seen directly...

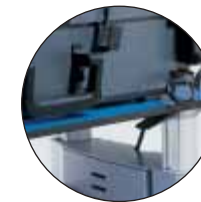


Media Elements

Without electricity and data access, a presentation is hardly conceivable nowadays.



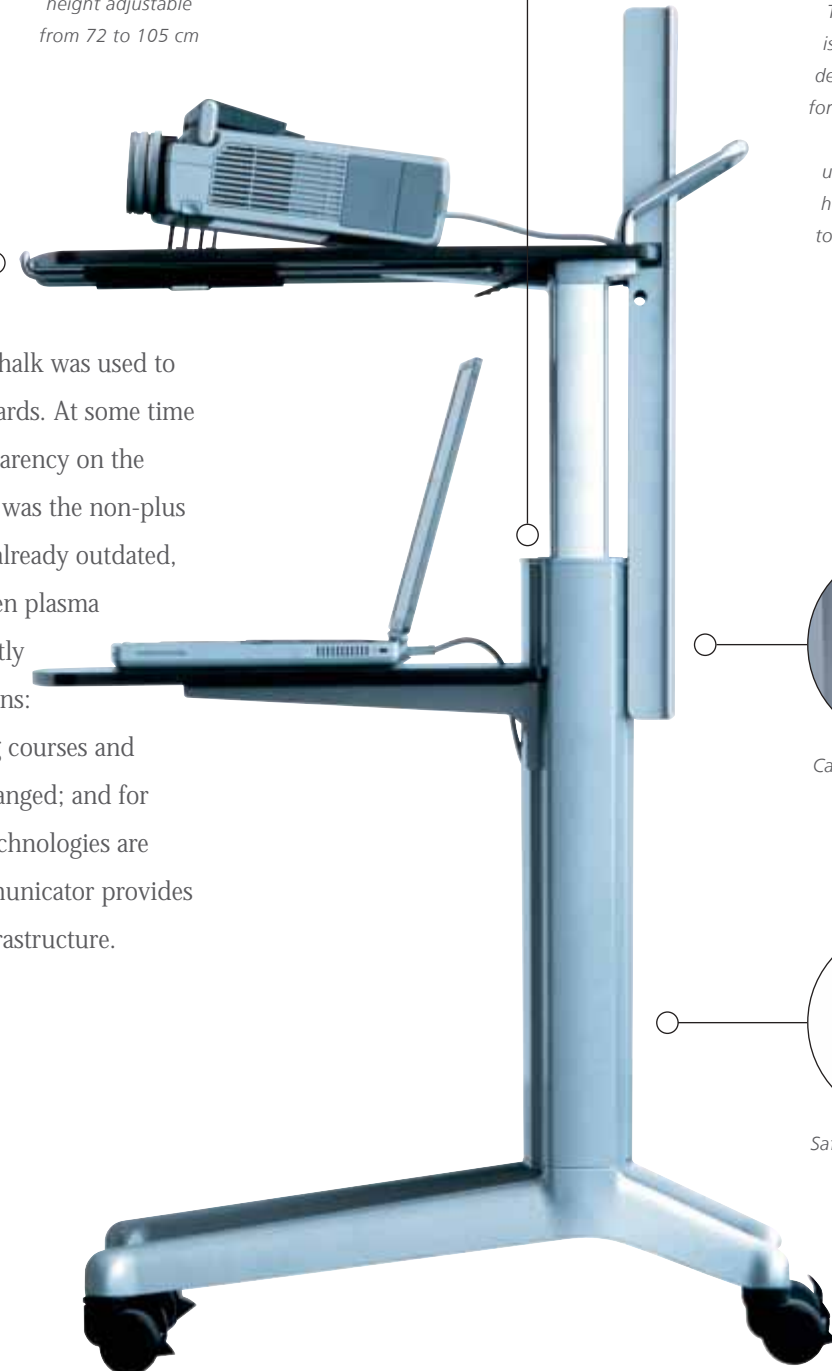
However you like:
Keyboard holder or
drawer for pens



Media board
height adjustable
from 72 to 105 cm

The Communicator is a good all-around device, ideal as an aid for modern technology. There are almost unlimited options of how to use it – from tool carrier to lectern.

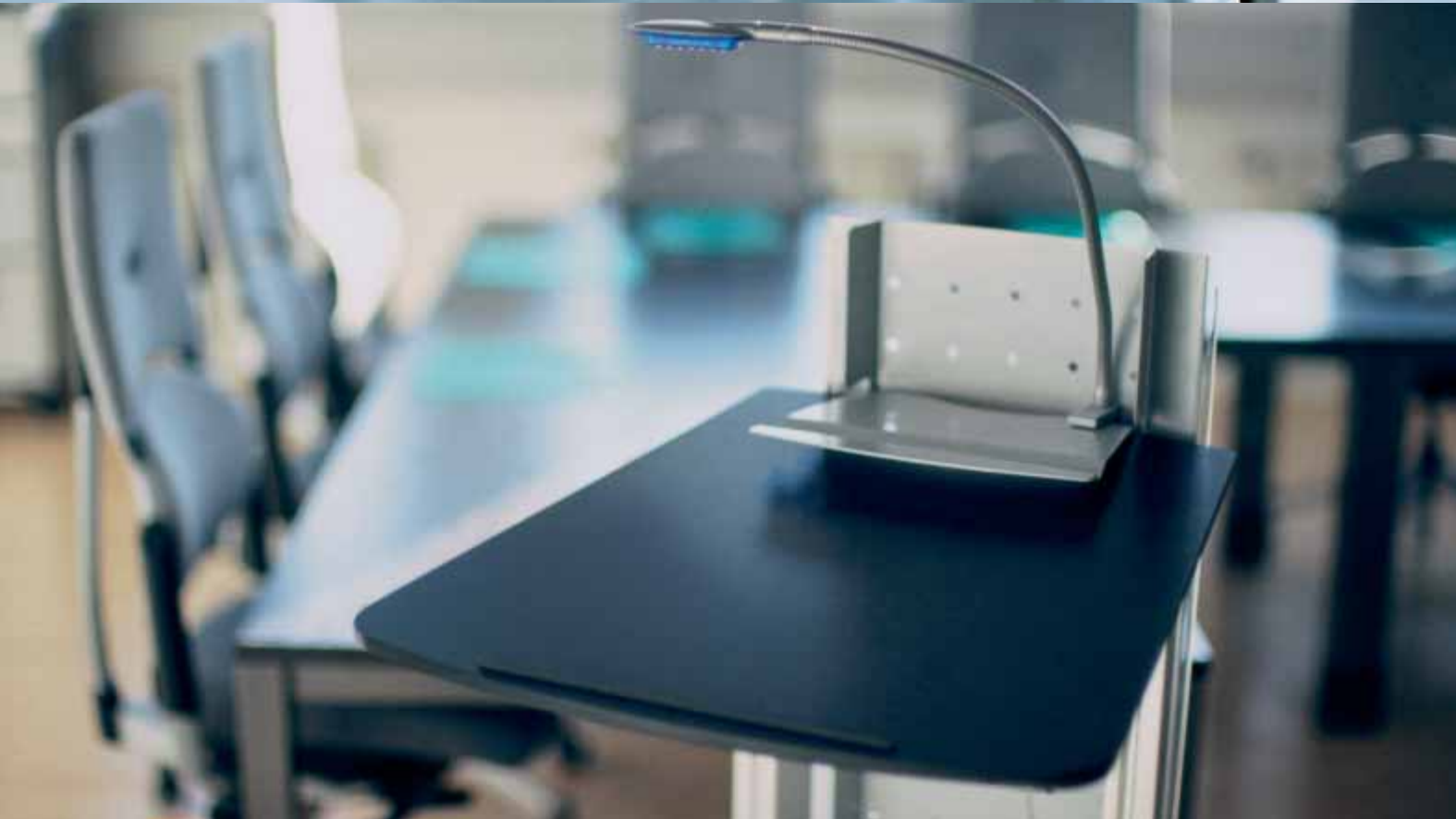
At the beginning, chalk was used to write onto blackboards. At some time or other, the transparency on the overhead projector was the non-plus ultra. Today, that's already outdated, too. Beamer and even plasma display are frequently standard. That means: The face of training courses and conferences has changed; and for that reason, new technologies are needed. The Communicator provides the appropriate infrastructure.



Cable duct with space for one or two multiple sockets



Safely accommodated: the computer



One or several drawers hold everything



In connection with a desk, a complete, mobile workplace



Optionally with laptop board for stand-up presentations



Lectern with flexible light, height adjustable from 85 to 113 cm



MEDIA CARRIER COMMUNICATOR

Wherever you need the plasma display, the Communicator media carrier will deliver it, including any accessories.



WHITE-BOARD
In two sizes:
77 or 150 x 109 cm



PROJECTION AREA
With rollers to move
on the strip



REVERSIBLE BOARD
With dual, or different,
functions



PINBOARD
Board made from
light-density material
120 x 150 cm

WALL RAIL
With integrated clips for
plans or posters

The Classic Variant

Presentations without PowerPoint? Hardly possible anymore. Now we have gone a step further: Hence, presentation rooms must be equipped with the latest communication tools. However, classic tools are still justifying their existence. Flipcharts or whiteboards, and also pinboards, are extremely useful. And now, they can be hung on rails with rollers making them mobile and flexible

(and consequently save space). Valuable details make them this useful; such as the aluminium strip to hold pads securely on the flipchart or the clamp strip on the wall rail...

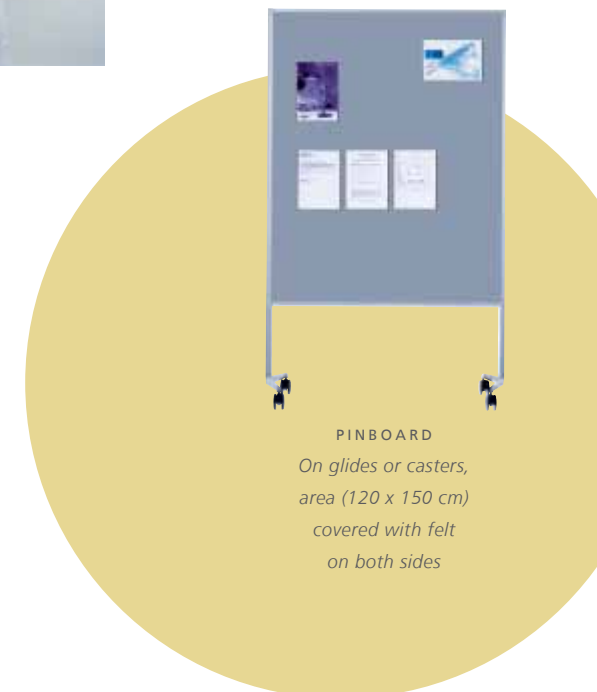


FLIPCHART
Frame (collapsible) on
glides or casters,
board height
adjustable by 20 cm



MEDIA CARRIER FREEWALL

The FreeWall media carrier grabs even the largest displays (and what ever else is included) – and is even mobile, if desired.



PINBOARD
On glides or casters,
area (120 x 150 cm)
covered with felt
on both sides



Storage Space



CATERING MOBY
Its interior fittings are thought-out to the last detail.

Muddle Makes Trouble

You have surely experienced it: A meeting, which has passed off absolutely smoothly. No hectic rush, all the tools available, documents ready, coffee and water within reach... You were able to simply concentrate on the essentials.

For any meeting to pass off in this way, meticulous preparation is required, or the right furnishings. Take the ViewPoint for example. Monitor, video recorder, documents... no problem. Or the Catering Moby. It's the perfection of the valet, with space for dishes, refreshments and even the rubbish.



VIEWPOINT
Sturdy enough for heavy items, attractive enough for any environment.



ENERGIZER
It's the modern version of the good old tea trolley.



RIO-GARAGE



RIO-GARAGE

The Rio-Garage holds anything that isn't momentarily needed: Chairs or tables, or what ever else is around. At the same time, it is mobile, available in various widths and heights, and even sound absorbent.



RIO-WARDROBE

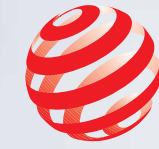


FREEWALL-WARDROBE



ZIKZAK

The wardrobe problem has never been solved more easily than with the Rio-Wardrobe, and never in a more attractive way than is shown by the FreeWall Wardrobe. ZikZak is setting new directions with its mesh sail in three colours. The two or three-piece modules may be interlinked to a light protective screen.



reddot
best of the best

ZIKZAK
A class of its own:
The light screen has just
been awarded the red
dot "best of the best"
by the design center
North Rhine-Westphalia.





WEB-WIZARD™
Booking conference rooms, querying free capacities or information on utilisation – it's quite simple now using a network connection and touch screen.

Media Elements



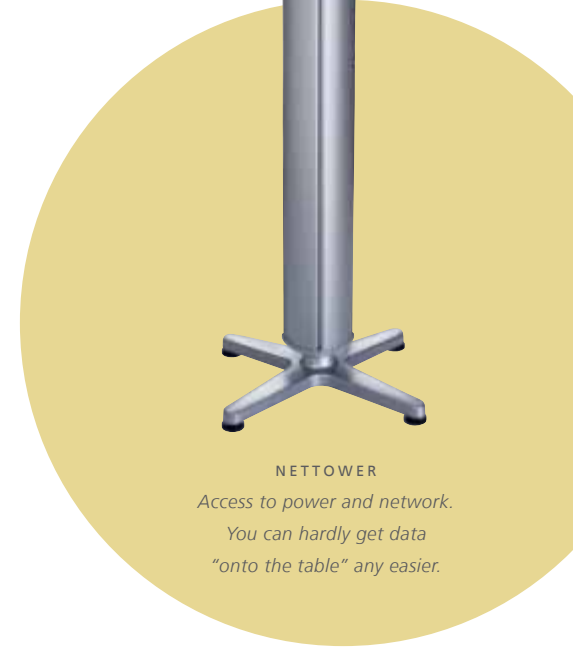
TOP ACCESS
The cable box firmly installed in the tabletop sorts out network components.



The future is already present

The world has shrunk: Companies are thinking and acting globally. Access to information and specific knowledge is always possible. The World Wide Web makes it possible. Direct communication without long journeys is no

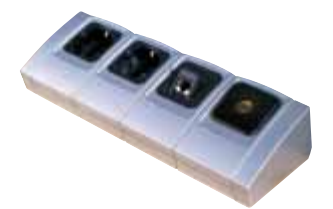
magic either: Videoconferences bridge continents. There is indeed a trend to the high-tech environment: Multimedia wall, access to information technology and audio-video equipment anywhere in the room... Technology today makes things we only dreamt of a few years ago possible.



NETTOWER
Access to power and network. You can hardly get data "onto the table" any easier.



COPYCAM
The technologically simple solution, whiteboards transformed into electronic copy-boards.



PLUG-IN STRIP
A module strip for sockets with different insets. Fixed to the table edge with clamp retainers.

Steelcase



Rethinking the office



Time to rethink your office ?

Steelcase Werndl AG
Georg-Aicher-Straße 7
D-83026 Rosenheim
Tel. 08031 405-0
Fax 08031 405-100
eMail: info@steelcase-werndl.de
International
Tel. +49 8031 405-500
Fax +49 8031 405-537

www.steelcase-werndl.de